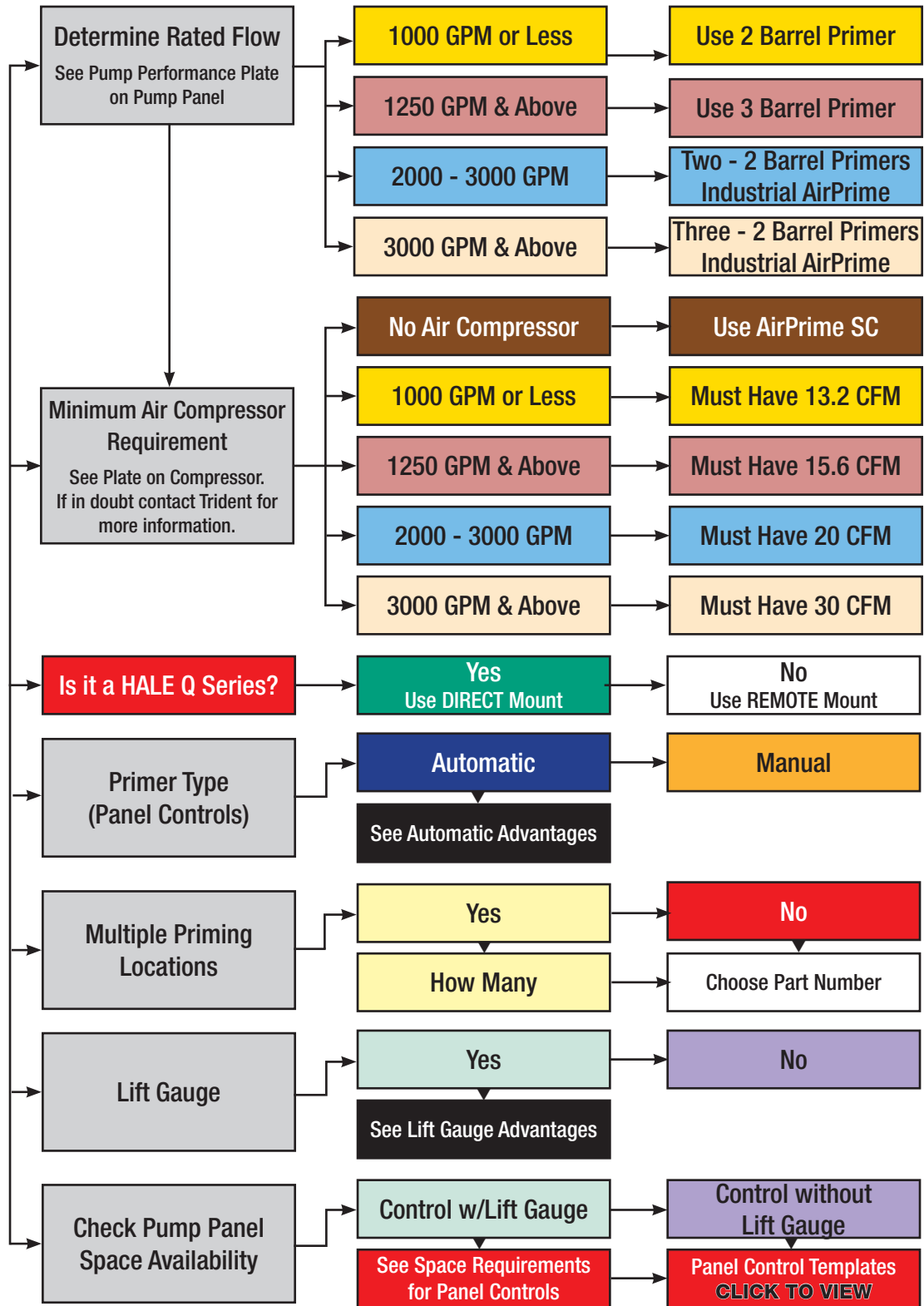


Replacing an Electric Pump Primer



Advantages of Auto AirPrime with Switch in the Auto Prime Position

- ▶ When the switch is left in the Auto Prime position, the primer will automatically activate upon placing the pump in gear.
- ▶ When the rocker switch is in the Auto Prime position, the Green Light will illuminate.
- ▶ Auto AirPrime monitors for interruptions of incoming water supply when the switch is in the Auto Prime position. The primer will activate if the discharge pressure drops below 20 PSI.
- ▶ Leave the rocker switch in the Auto Prime position to automatically remove slugs of air that may occur.
- ▶ When in the Auto Prime position the primer will remove air trapped within multiple lengths of Large Diameter Hose (LDH).
- ▶ When the rocker switch is left in the AutoPrime position it is one less function for the pump operator to perform.
- ▶ When the rocker switch is left in the AutoPrime position it will help maintain consistent discharge water flow.

AirPrime™ Part Numbers

Type	Compressor	Mounting	Panel Control(s)	Location(s)	Part Number	Part Number
Number of Barrels	Minimum CFM Rating	¾" NPT, Any Pump, Remote Mount Hale-Midship Q Series Direct Mount	Automatic Manual	Number of Priming Locations	Model Without Lift Gauge	Model With Lift Gauge

Automatic with Rocker Switch – Single Priming Location – 2 Barrel						
2 Barrel	13.2 CFM	Any Pump, Remote Mount	12-Volt Switch	Fire Pump Only	31.003.5	31.013.5

Manual with Push Button – Single Priming Location – 2 Barrel						
2 Barrel	13.2 CFM	Any Pump, Remote Mount	Push Button	Fire Pump Only	31.003.7	31.013.7
2 Barrel	13.2 CFM	Hale-Midship Q Series Direct Mount	Push Button	Fire Pump Only	31.003.2	31.013.2

Automatic with Rocker Switch – Single Priming Location – 3 Barrel						
3 Barrel	15.6 CFM	Any Pump, Remote Mount	12-Volt Switch	Fire Pump Only	31.001.3	31.011.3
3 Barrel	15.6 CFM	Hale-Midship Q Series Direct Mount	12-Volt Switch	Fire Pump Only	31.001.0	31.011.0

Manual with Push Button – Single Priming Location – 3 Barrel						
3 Barrel	15.6 CFM	Any Pump, Remote Mount	Push Button	Fire Pump Only	31.001.7	31.011.7
3 Barrel	15.6 CFM	Hale-Midship Q Series Direct Mount	Push Button	Fire Pump Only	31.001.2	31.011.2

Automatic with Rocker Switch – Multiple Priming Locations – 3 Barrel						
3 Barrel	15.6 CFM	Any Pump, Remote Mount	12-Volt Switch + 1 Push Button	Pump + 1 Inlet	31.001.21	31.011.21
3 Barrel	15.6 CFM	Any Pump, Remote Mount	12-Volt Switch + 2 Push Buttons	Pump + 2 Inlets	31.001.22	31.011.22
3 Barrel	15.6 CFM	Any Pump, Remote Mount	12-Volt Switch + 3 Push Buttons	Pump + 3 Inlets	31.001.23	31.011.23
3 Barrel	15.6 CFM	Any Pump, Remote Mount	12-Volt Switch + 4 Push Buttons	Pump + 4 Inlets	31.001.25	31.011.25

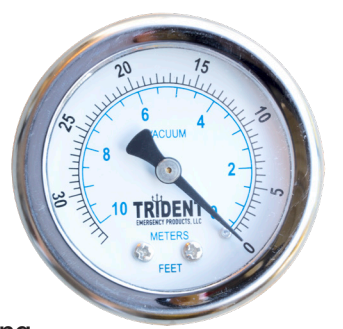
Manual with Push Button – Multiple Priming Locations – 3 Barrel						
3 Barrel	15.6 CFM	Any Pump, Remote Mount	2 Push Buttons	Pump + 1 Inlet	31.001.11	31.011.11
3 Barrel	15.6 CFM	Any Pump, Remote Mount	3 Push Buttons	Pump + 2 Inlets	31.001.12	31.011.12
3 Barrel	15.6 CFM	Any Pump, Remote Mount	4 Push Buttons	Pump + 3 Inlets	31.001.13	31.011.13
3 Barrel	15.6 CFM	Any Pump, Remote Mount	5 Push Buttons	Pump + 4 Inlets	31.001.15	31.011.15

Industrial AirPrime – Automatic with Rocker Switch						
Two - 2 Barrels	20 CFM	Any Pump, Remote Mount	12-Volt Switch	Pump + 1 Inlet	31.013.44	31.013.43
Three - 2 Barrels	30 CFM	Any Pump, Remote Mount	12-Volt Switch	Pump + 2 Inlets	Not Available	31.013.42

Vehicles Without Air Brakes - AirPrime SC – Manual with Push Button						
3 Barrel	100 PSI from SCBA	Small Pump, Remote Mount	Push Button	Fire Pump Only	31.001.50	Not Available

Advantages of a Lift Gauge

- ▶ A vacuum gauge indicates the lift of water in feet and meters while the primer is operating.
- ▶ Allows for visual verification of the status of the incoming water.
- ▶ Assists in noisy environments to validate that your efforts to obtain a water supply are working.
- ▶ Minimal cost, additional primer functionality.
- ▶ Utilizes vacuum created by the primer to activate the gauge.
- ▶ Works automatically, no additional controls.
- ▶ Only requires 2" more space on the pump panel to incorporate the gauge.
- ▶ Highly recommended for all installations with multiple priming locations to indicate when pre-priming of a location is complete.



NOTE: Please contact [Trident](#) for 24 Volt Automatic application part numbers and pricing.

